

Elevation A

Elevation B



Alquinn Homes Ltd.

www.alquinnhomes.com

Box 4330 • 106, 301 Saskatchewan Ave

Spruce Grove, AB • T7X 3B5

Phone: 780.962.1046

# BURKE

1553 sq ft

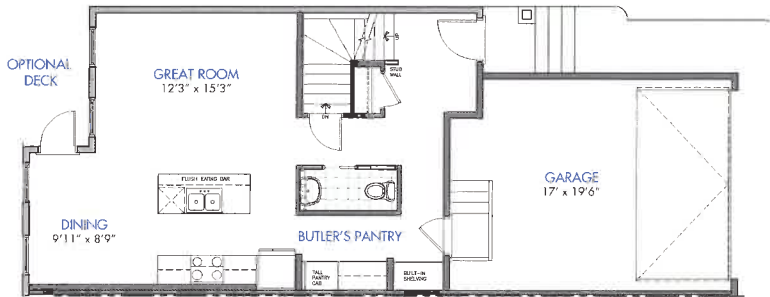
BEDROOMS: 3

BATHROOMS: 2 ½

A spacious two storey duplex with a cozy feel. Adding an optional fireplace to the great room enhances the comfortable nature of the space. The upper floor delivers a modest layout featuring a versatile flex room and a master bedroom that includes a spacious ensuite and walk in closet.

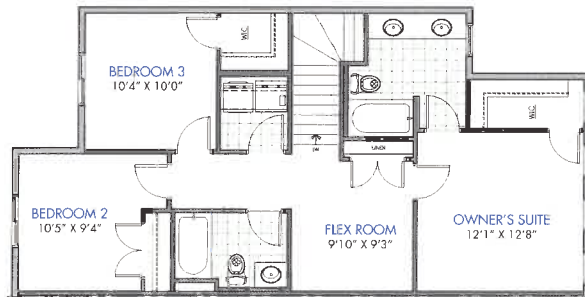
MAIN FLOOR

683 sq ft



UPPER FLOOR

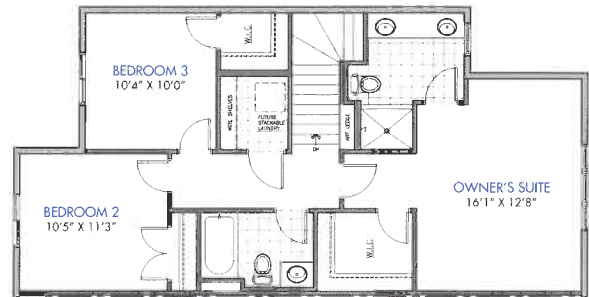
870 sq ft



UPPER FLOOR

Revised Option

870 sq ft



# Alquinn Homes Ltd.

Homes Built for Life

Any use or reproduction in whole or in part of these floor plans or promotional materials without the prior written authorization of Alquinn Homes Ltd. is strictly prohibited. Floorplans, specifications and dimensions shown are approximate and subject to change without notice. \*

© 2014 Alquinn Homes Ltd. All rights reserved.